

Audio Receiver for Entering the World of High-Quality Car Audio



FULL DOT LCD **Separated Color** **MULTI-LANGUAGE DISPLAY** **CD-R/RW** **MP3 WMA AAC** **SD** **AUX IN** **RCA pre-outs** **Hi-VOLT** **24bit DA Converter** **Dual USB** **Made for iPod iPhone**
DSP **Level Key** **FLAP FACE** **Anti-Dust Design** **WIRED REMOTE INPUT** **RDS** **SUPER TUNER III** **MOSFET 50Wx4** **RETRACTABLE FACE SECURITY** **Music Browser**

Key Selling Point

- Devices and materials carefully selected according to the highest standards to achieve the ultimate in sound quality.
- Pioneer's exclusive sound field technologies including Auto EQ and Auto Time Alignment help optimize audio in ways that perfectly suit particular listening spaces and allow subtle manual control of settings.
- Versatile connectivity helps deliver exceptional sound quality from various digital devices.

Main Features

- Dual USB Ports (Rear: High Current 1A Handling Capability)
- Advanced Sound Retriever
- Direct Control for iPod/iPhone (USB)
- Multi-Language Display

iPod/iPhone Compatibility

Made for
iPhone 5s, iPhone 5c, iPhone 5
iPhone 4s
iPhone 4
iPhone 3GS
iPhone 3G
iPhone
iPod touch (1st, 2nd, 3rd, 4th, and 5th generation)
iPod classic
iPod with video
iPod nano (1st, 2nd, 3rd, 4th, 5th, 6th, and 7th generation)

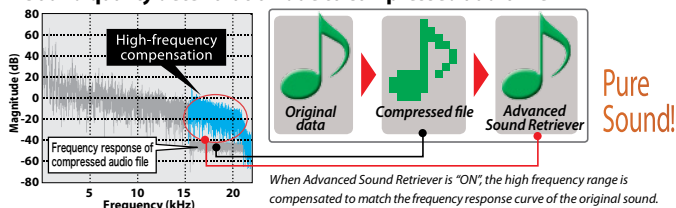
Notes: Receiver may not operate other iPod or iPhone models. Compatibility with unit and operations may vary depending on the software version.

Technologies

Advance Sound Retriever

Hear the detail, warmth and clarity, the way the artist intended it, from all of your highly compressed MP3 and WMA files stored on USB device, iPod*, Android** phone and portable media players. By restoring data (especially higher frequencies) that tend to get lost in the digital compression process, Pioneer's Advanced Sound Retriever technology enhances audio reproduction nearly all the way up to 20 kHz frequencies.

Sound quality deterioration due to compressed audio file



High Performance Burr-Brown 24-bit Advanced Segment D/A Converter x 3

Incorporation of three circuit boards for each of high, mid and low frequency ranges make for exceptional linear sound reproduction with wide dynamic range and low distortion of original sources.



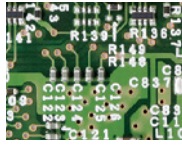
Full-Custom High-Capacitance Power Supply Capacitor

Stabilizes power supply to keep sound clear and consistent. Original parts are developed and tuned for optimal sound quality through close examination of materials and repeated listening trials.



Four-Layer Circuit Board Design

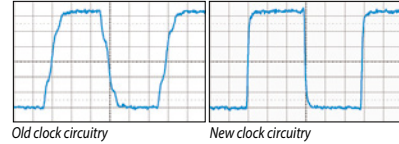
Uses four-layer copper foil, and parts are set by reflow mounting to both sides of the circuit board. A more highly integrated parts layout makes the circuit board significantly more compact than a conventional one. Ground and power supply patterns are mainly used in the inside layer and the lower impedance as a result greatly reduces noise.



Sound Master Clock Circuitry

Generates clock waveforms to read and process digital signals with extraordinary precision to eliminate jitter (digital signal time axis fluctuation noise). Very fine signals can be accurately reproduced.

Clock Wave Form Comparison



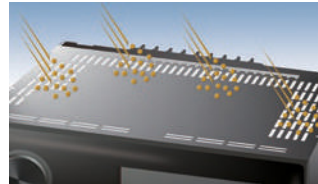
Anti-Dust Design



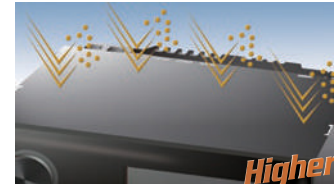
Pioneer heat release structure can reduce ventilation holes & clearance gaps. The results are optimally efficient heat dissipation and prevention of entry of dust that can cause malfunction.

*The effect might change depending on the environment of the car.

Anti-Dust Structure Image



Non-anti-dust design



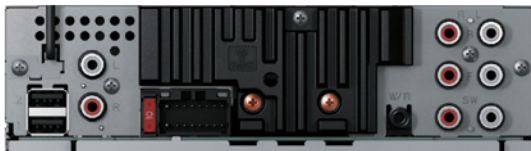
Anti-dust design

Higher Reliability

Main Specifications

CD PLAYER / MEDIA PLAYBACK SECTION					
D/A Converter :	Burr Brown 24-bit		CD-R/CD-RW Compatible		WMA/MP3/WAV Playback Disc List CD Text iTunes AAC Playback
TUNER SECTION					
Supertuner IIID		24 Stations/6 Presets: 24 Stations		BSM (Best Station Memory)	RDS
AUDIO SECTION					
Built-in Amplifier:	MOSFET 50 W x 4		Equalizer: Dual L/R (16 Band GEQ)		Advanced Sound Retriever Loudness: 1-Mode
Selectable Fader		Crossover Network: 3 way		Hi-Volt RCA Preouts: 3 (5 V)	Auto EQ & Auto time Alignment
BLUETOOTH / IPOD / SD MEMORY CARD / USB CONTROL					
USB Direct Control For iPod / iPhone		USB Port: Rear x 2		SD/SDHC Memory Card Slot	Music Browser (SD/USB)
GENERAL					
Aux Inputs (3.5 mm mini jack):	Front		Display off Mode		Display with LED Backlight: Full Dot OEL (3-Line) Multi-Language Display
Spectrum Analyzer		Remote Control		Rotary Volume Control	Wired Remote Input Color Customization Flap face Anti-Dust Design

Rear Panel



Accessories



For more information please visit
www.pioneer-mea.com

Year of Release: 2016



884938151962

Pioneer, Gulf Free Zone Dubai, U.A.E.
 Tel: +971 4 8815756, Fax 8816414
 Email: support@pioneer-uae.com
www.pioneer-mea.com

Corporate web : www.pioneer.jp

Copyright Info: ©2016 Pioneer MEA. All Rights Reserved. Reproduction in whole or in part without written permission is prohibited. Design, Features and Specifications are subject to change without notice.