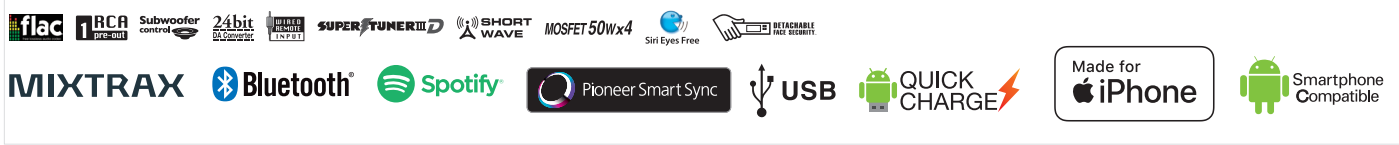


Digital Media Receiver with MIXTRAX, Built-in Bluetooth®, and Direct Control for iPod/iPhone and Certain Android Phones



## Key Selling Point

- Delivering an evolutionary leap in communication between your smartphone and your audio receiver, Pioneer Smart Sync App introduces new enjoyment inside your car.
- Greatly improved connectivity to access various media.
- New audio advancements have been built in for superior audio performance.



## Main Features

- Bluetooth for Hands-Free Calling & Wireless Audio
- Direct Control for iPhone (USB/ Bluetooth)
- Direct Control for Certain Android Phones (USB)
- Siri Eyes Free
- Media App Control (iPhone/Android)
- Pioneer Smart Sync (iPhone/Android)
- Bright USB Port (Front: High Current 1A Handling Capability)
- AUX Input (Front)
- Spotify®
- MP3/WMA/WAV/AAC/FLAC\* Playback
- Supertuner® IIID
- RDS
- Shortwave Tuner (GS)
- MOSFET50Wx4 +RCAPreoutsx1 (2V)
- Manual Time Alignment
- 13-Band EQ
- Advanced Sound Retriever
- Advanced Sound Retriever for Bluetooth Wireless Audio

### iPhone Compatibility

Made for
iPhone 7 Plus, iPhone 7
iPhone SE
iPhone 6s Plus, iPhone 6s, iPhone 6 Plus, iPhone 6
iPhone 5s, iPhone 5c, iPhone 5

Notes: Receiver may not operate other iPod or iPhone models. Compatibility with unit and operations may vary depending on the software version.

## Technologies

### Pioneer Smart Sync App Compatible

NEW

#### Smooth Hard Key Operation

1. Navi Key To launch Navi App.
2. Rotary Key To read out text messages. Press and hold to launch Pioneer Smart Sync App.
3. BASS Boost Key To activate Dynamic Bass Enhancer Effect. Press and hold to activate Super "Todoroki" Sound Effect.
4. Phone Key To answer phone calls. Press and hold to start voice recognition.



## Greater Variety of Sound Effects

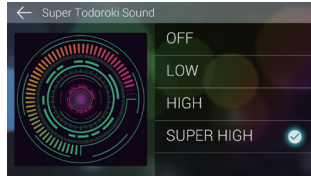


Pioneer Smart Sync App gives you many more ways to enjoy music than with receiver alone.



**31-Band EQ**  
Customize your music with fine adjustments. Or, use the many presets to enjoy various sound reproduction.

\*Applies only to smartphone source.



**Super "Todoroki" Sound Effect**  
Dynamic bass enhancement from the integrated performance of the Pioneer Smart Sync App and receiver EQ. Special low-range digital processing and mid-range and high-range adjustment delivers deep and rich bass sound and contrast.



**Easy Sound Fit (Time Alignment)**  
With one touch, you select your vehicle type and this feature optimally aligns the output timing of the various speakers in your car.

\*Applies only to smartphone source.



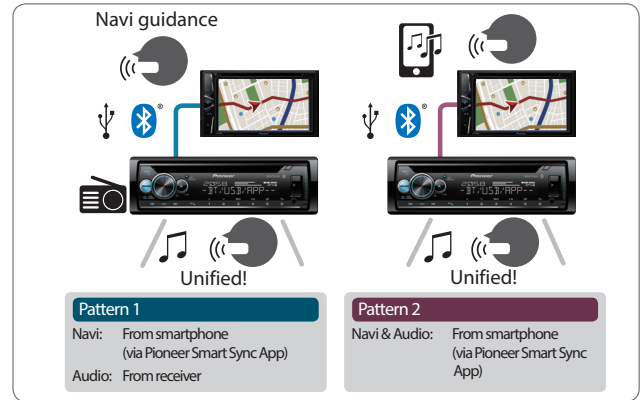
**Live Simulation Sound Effect**  
Digital effect processing and SE mixing applies the sensation of a live performance to your music. Presets include Stadium, Live House, Hall, and more.

\*Applies only to smartphone source.

Note: The App display images shown above may be changed.

## Navi-Guide Voice Mixing

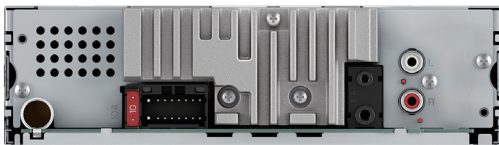
Navi guidance from your smartphone plays through the receiver. During navi guidance, the music source is automatically attenuated.



## Main Specifications

<b>CD/USB/SD MEMORY CARD/BLUETOOTH®/IPOD/ANDROID/MEDIA PLAYBACK</b>	
WMA/MP3/WAV Playback	Media App Control: Android   Pioneer ARC: iPhone/Android   Spotify   FLAC Playback   Siri Eyes Free
Built-In Bluetooth: HFP/A2DP/AVRCP/SSP/SPP	Direct Control for Certain Android Phones: USB   USB Port: Front   AUX Input (3.5mm mini-jack): Front
iTunes AAC Playback	Direct Control for iPhone: USB/Bluetooth
<b>TUNER</b>	
Supertuner IIIID	6 Presets: 36 Stations   BSM (Best Station Memory)   Shortwave Tuner   RDS
<b>AUDIO</b>	
Built-in Amplifier: MOSFET 50 W x 4	Equalizer: 13-Band GEQ   Advanced Sound Retriever for Bluetooth Wireless Audio   Advanced Sound Retriever
Loudness: 3-Mode	Selectable Fader   Crossover Network: HPF/LPF   Subwoofer Control   RCA Preouts: 1 (2V)
D/A Converter: 24-bit	Manual Time Alignment   Dynamic Bass Enhancer (Direct Access Key)
<b>MIXTRAX</b>	
Mixtrax EZ	Compatible Source: iPhone/USB   Short Playback mode
<b>GENERAL</b>	
Display off Mode	Display with LED Backlight: Longer VA LCD (2-Line)   Detachable Face Security   Navi Guide Mix Function
Illumination Effect & Timer	Spectrum Analyzer   Level Indicator   Remote Control   Rotary Volume Control   Wired Remote Input
Preset Steering Wheel Control	Brightness Setting: 10-Step   Manual Dimmer Control   Two-Phone Full Time Connection
USB Source Change Function	USB Quick Charge for Android (CDP)

## Rear Panel



## Accessories



For more information please visit  
[www.pioneer-mea.com](http://www.pioneer-mea.com)  
[facebook.com/PioneerMEA](https://facebook.com/PioneerMEA)

Year of Release: 2018

Pioneer, Gulf Free Zone Dubai, U.A.E.  
 Tel: +971 4 8815756, Fax 8816414  
 Email: support@pioneer-uae.com  
[www.pioneer-mea.com](http://www.pioneer-mea.com)

Corporate web : [www.pioneer.jp](http://www.pioneer.jp)

Copyright Info: ©2016 Pioneer MEA. All Rights Reserved. Reproduction in whole or in part without written permission is prohibited. Design, Features and Specifications are subject to change without notice.



8 84938 40554 6